



West London GMP Performance Report 2007/8

Compiled by: Karen Randall, Head of Project

**Submissions by:
George Leonard (Community Outreach Officer),
Oliver Gilbody (Project Development Officer)**

Steph Bedford (Your Zone)

Contents

Project Summary	3
Key Interventions	4
Condom Distribution	4
West 6 – Gay Men’s Clinic Support.....	7
Outreach	8
West London Gay Men’s Project Website.....	10
Your Zone Youth Project	11
The Source Newsletter	13
Consultation.....	14
1-2-1 Advice and Support.....	14
Resources Service.....	16
Other Services/Issues	16

Project Summary

2007/8 has been a period of considerable activity for the Project. It has successfully formed new partnerships, in particular the GMI Partnership with the Metro Centre in Greenwich and Positive East in Stepney, which won two of its bids for Pan London work (Health Trainers and Counselling).

Additionally, new Rapid HIV Testing services have been set up, and these have attracted increasing numbers of MSM. New online media have given the Project access to men who we were not reaching before, in particular our Facebook page, and our successful condom and lubricant service, 24s, remains popular and increasingly in demand.

The year has seen several issues of The Source newsletter, delivering information for MSM direct and to services who work with them eg primary care.

In addition to this work the Project invests time at a strategic level, working with Primary Care Trusts and other strategic grouping to review, evidence and feed into best and changing need and practice in terms of sexual health for MSM.

Work funded by the Home Office and Community Safety Partnerships boards around homophobic crime has continued with campaigns on escalators and billboards at tube stations in West and Central London. The homophobic crime reporting kiosk at the Windsor Castle has been active for a year, and an evaluation report is available.

Key Interventions

Condom Distribution

11% allocation of annual budget

Condom distribution outperformed targets last year, whilst being delivered within budget. Cumulative distribution totals for 2007/08 are:

	Provider	Outreach	Total	Target
Condoms	49,128	20,364	69,492	65,000*
Lube	2047	848	2895	2708

*65,000 24s condoms, 6000 Freedoms target

Key to above table

ON TARGET	UNDER TARGET	OVER TARGET
-----------	--------------	-------------

The Information Centre at the Kobler clinic continues to be the biggest distributor of 24s packs. However when combining the amount distributed through the WLCSH and the West 6 clinic (both at Charing Cross Hospital GU Clinic), Charing Cross are at similar volume. (see table below).

24s membership stands at 2582 members, with 415 new members this year.

- 69,492 condoms have been distributed through the 24s scheme (both through outreach and 'static' sites), equating to 107% of this year's distribution target.
- 5000 condoms have been distributed through supplying Freedoms to sexual health clinics and other providers in the first three quarters. This is 83% of this year's target (6000 condoms).
- 66 refills were collected this year by returning members.
- There are fewer requests for Freedoms as providers report that men prefer 24s. We therefore reduced our target for their distribution from 8000 condoms to 6000 in order to supply the more popular 24s. We will reduce the target further for 2008/9 to reflect the continuing low levels of demand for Freedoms packs in West London.

Condom Distribution to Providers

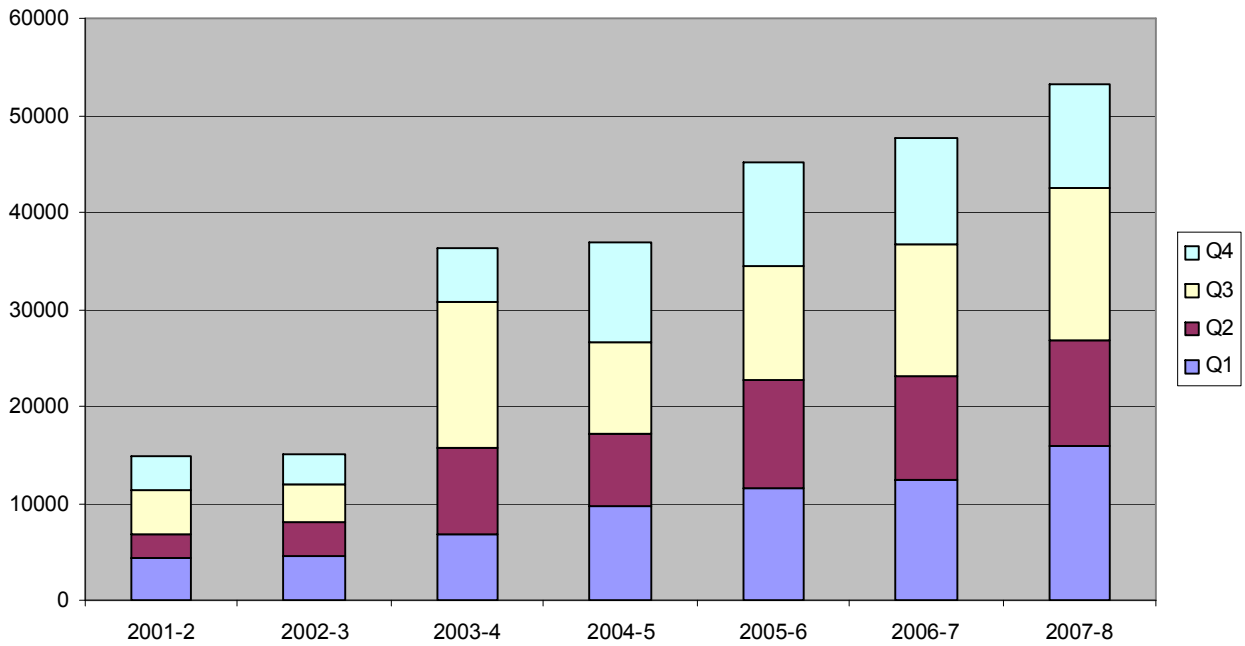


Table: 24s Condom distribution by provider (Freedoms provision in addition to this)

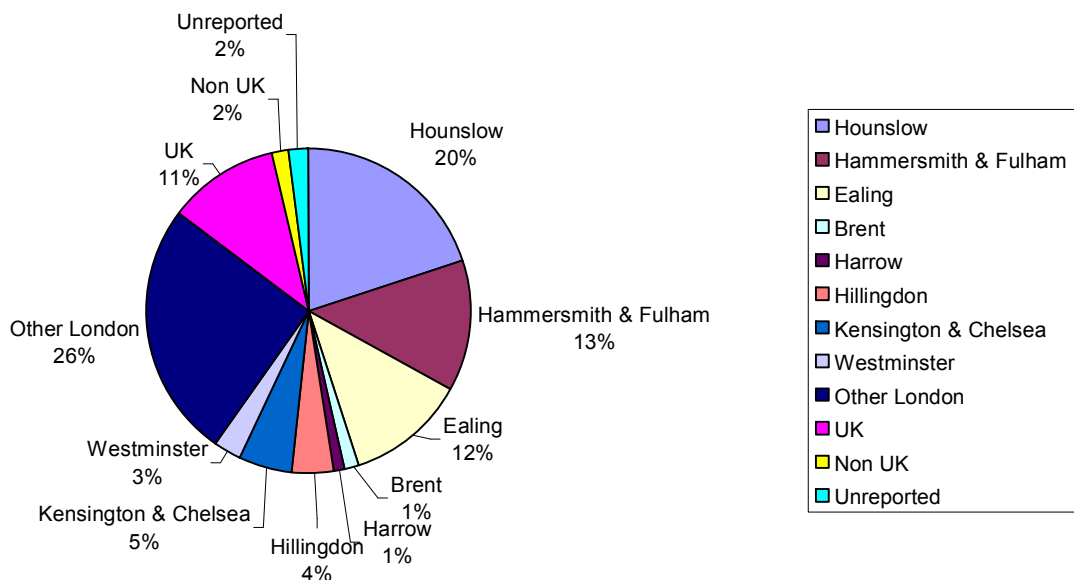
	Q1	Q2	Q3	Q4	Total
West 6	1920	2520	2280	2448	9168
WLC SH	1920	960	1920	960	5760
Naz Project	960	0	2400	960	4320
River House	360	720	720	960	2760
WMUH	2880	1920	1680	2880	9360
Ealing Hospital	960	0	720	0	1680
Yourzone	480	0	0	0	480
SW5	1920	960	0	0	2880
Kobler	2880	2400	4320	2400	12000
TVU Healthcare dept	0	0	0	0	0
HART	0	720	0	0	720
Outreach	7152	3863	5814	3535	20364
TOTAL	21432	14063	19,854	14,143	69,492

Table: New Members, Refills and Promotional Packs

	Q1	Q2	Q3	Q4	Total	Target
New (outreach)	132	81	77	55	345	
New (other)	19	21	22	8	70	
TOTAL NEW	151	102	99	63	415	300
Refill (outreach)	63	61	61	66	251	50% of new members
Promotional packs	106	19	108	30	263	
Refusals	73	35	93	104	305	

The graph below shows where the new members that obtained 24s reside. 45% reside in Ealing, Hammersmith or Hounslow. A further 14% live in the other boroughs in North West London, with 5% in Kensington and Chelsea.

Residence of 24s new members



The Project monitors the ethnicity of men coming back for **refills** as well as those who join as **new** members. The table below shows that in terms of targets for new members. The Project is exceeding or on target for Black, White and Other ethnic groups but under target for Asian and Mixed. However in terms of refill packs (ie registered members returning for additional 24s bags) the Project is under target this quarter on all categories except Black and Other. Low numbers (n=66) mean that seeing one or two less men from BME groups can enable a target to be missed, however attention and thought will be given to ensure that a more balanced repeat user level is maintained in 2008/09.

	<i>New</i>	<i>Refill</i>	Target
Asian	4 (7%)	2 (3%)	7.3 – 19.8%
Black	5 (9%)	3 (4.5%)	4.1 – 8%
Mixed	2 (4%)	1 (1.5%)	4.1 – 4.3%
Other	4 (7%)	1 (1.5%)	4.5 – 6.5%
White	39 (71%)	44 (67%)	65.3 – 81.4%

Key to above table

ON TARGET	UNDER TARGET	OVER TARGET
-----------	--------------	-------------

West 6 – Gay Men’s Clinic Support

3.5% allocation of annual budget

The Project works as a partner with West London Centre for Sexual Health (WLC SH) to run a ‘men who have sex with men’ (MSM) specific clinic on a Tuesday evening.

- 13 clinic sessions took place in 2007/08 with 102 contacts for 24s bags
- 2448 condoms and 102 bottles of lubricant were distributed to MSM during clinic sessions by WLGMP
- The majority of the refusals for 24s bags were men saying they had enough condoms already. This is not uncommon where men return several weeks in a row for treatment.
- 4 men have become members of the scheme this quarter through the clinic sessions
- The last Steering Group meeting was held 29th January 2008
- This project has been documented in a Department of Health report as a model of good practice and partnership working for pilots.

	Q1	Q2	Q3	Q4	Total
# clinic sessions	14	13	12	13	39
24s out (condoms)	1920 (80 bags)	2520 (105 bags)	2280	1448	6680
24s declined	25	34	31	28	90
# contacts	105	139	95	102	339
# in-depth contacts	1	1	0	5	2
Returned membership forms	3	8	3	4	14

Outreach

19.5% allocation of annual budget. During 2007-8:

- 66 outreach sessions were completed, taking number of sessions delivered, equating to 100% of our annual target.
- There have been a total of 254 contacts with men of which 28 were in-depth (11% of all contacts – see table below). All in-depth contacts were on various sexual health issues and issues relating to homophobic crime. **The target for in depth contacts for 2008/09 will be increased to 20%.**
- Eight BME targeted outreach session have been delivered. The WLGMP targets certain venues in order to ensure that all communities represented in West London are reflected in its access figures. Currently the Project works at Kali, a venue at which there are a disproportionate number of Asian MSM, Bootylicious, a club with a high proportion of Black men and Exilio, a club for Latin American men. This is 100% of BME targeted work for the year and on target.
- Ethnicity targets for contacts were met except for Other and White men. (see table below). **BME targeted outreach will continue for 2008/9 with a focus on reaching more men from BME communities and a view to identifying new settings for this work.**

Number of contacts					
	Q1	Q2	Q3	Q4	Total
Total	393	298	354	254	1299

In Depth Contacts only (annual) (n=100)

Residence					
	Q1	Q2	Q3	Q4	Total
Ealing	3	1	7	0	11 (11%)
Ham Ful	3	4	5	6	18 (18%)
Hounslow	3	2	6	6	17 (17%)
Richmond	4	1	0	0	5 (5%)
K & C	3	4	0	2	9 (9%)
Westminster			2	1	3 (3%)
Hillingdon	0	2	0	0	2 (2%)
Brent			1	0	1 (1%)
Harrow			1	3	4 (4%)

Other London and UK	10	5	5	5	25 (25%)
Total	26	19	27	28	100

Ethnicity						
	Q1	Q2	Q3	Q4	Total	Target
Asian	3	1	1	2	7 (7%)	6.7 – 19.8%
Black	1	1	1	0	3 (3%)	1.5 – 8.0%
Mixed	0	2	1	0	3 (3%)	2.7 – 3.4%
Other	1	0	0	0	1 (1%)	3.5 – 4.5%
White	20	15	27	25	87 (87%)	68.3 – 84.5%
Total	25	19	30	27	101	

Age					
	Q1	Q2	Q3	Q4	Total
19 and under	2	1	0	0	3 (4%)
20-29	6	4	8	5	18 (25%)
30-39	10	9	10	12	29 (40%)
40-49	7	4	8	9	19 (16%)
50+	0	1	2	2	3 (4%)
Not recorded	0	0	0	0	0 (0%)
Total	25	19	28	28	100

HIV Status: 1 in depth contacts (3%) identified as HIV Positive in Quarter 4.

West London Gay Men's Project Website

3.6% allocation of annual budget

The website provides low cost, alternative access to information and services provided by WLGMP and other services across West London.

This year the Project has created a Facebook presence, with very successful results in reaching men (234 so far this year) that otherwise may not have encountered the Project.

Web statistics:

	Q1	Q2	Q3	Q4	Cumulative total
Number of visitors	1031	859	1444	1614	4948
Number of 'unique' visitors	824	708	1169	1248	3949
Number of 'returning' visitors	207	151	275	366	999
Number of pages viewed	48,542	40,709	70,353	123,800	283,404

- Number of returning visitors: 23% return regularly
- 57% of all visitors to the site arrived there directly. 36% of visitors to the site arrived via a search engine, a further 4% of all visitors arrived through the Hounslow Council website with 2.5% arriving through links on other websites.
- The most popular pages (with most popular first) were: Home Page and the index consistently throughout the year. For quarter 4 the next most popular page varied. These were: Sexual Health, Homophobic Crime, News, Services, The Source, Young People and 24s.

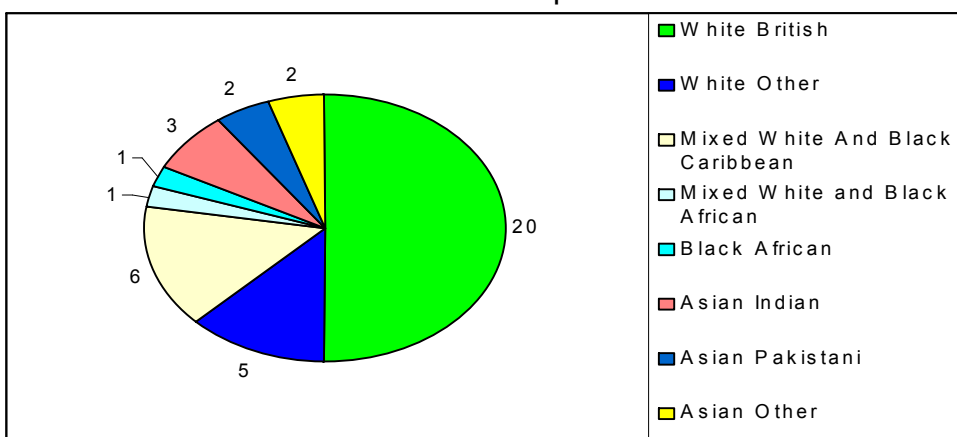
Your Zone Youth Project
27% allocation of annual budget

Attendances (number of young people) at a glance:

	Q1	Q2	Q3	Q4	Total
OOT	113 (40)	NA	NA	NA	113 (40)
Your Zone	72 (37)	72 (41)	56 (31)	64 (40)	264 (149)

Over the past quarter, **5** new members and **4** new contacts have accessed services -.5 women and 4 men. Ages of men attending: 4 in the 13-19 age range and 15 in the 19-25 age range.

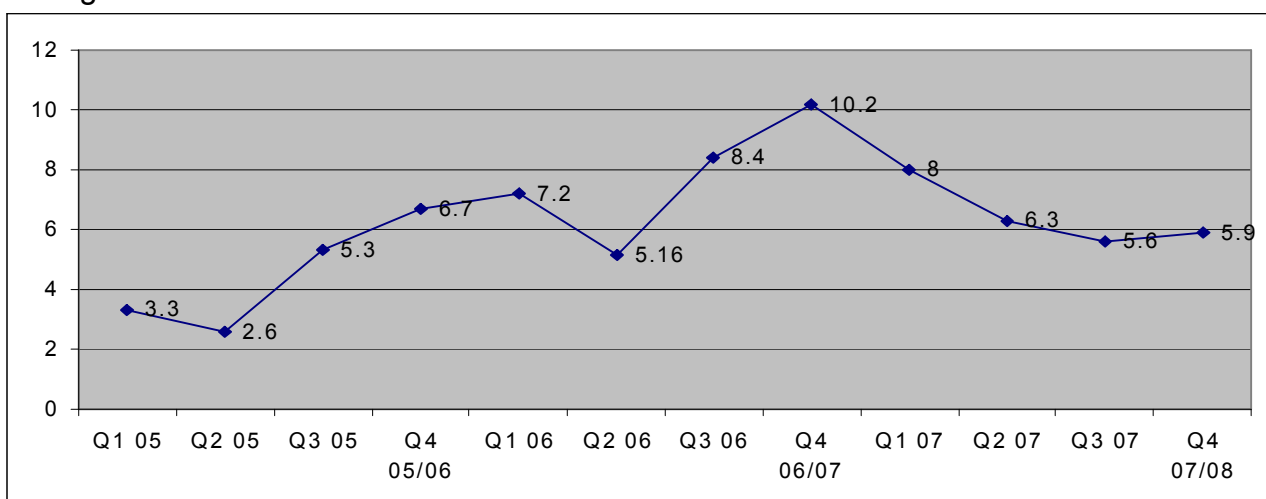
Ethnic Breakdown of Active Membership



Of the 40 active contacts, 25 (62.5%) were resident in Ealing, a further 4 (10%) from NW Sector. 11 contacts (27.5%) were from outside NW London.

Monday Group

Average attendance



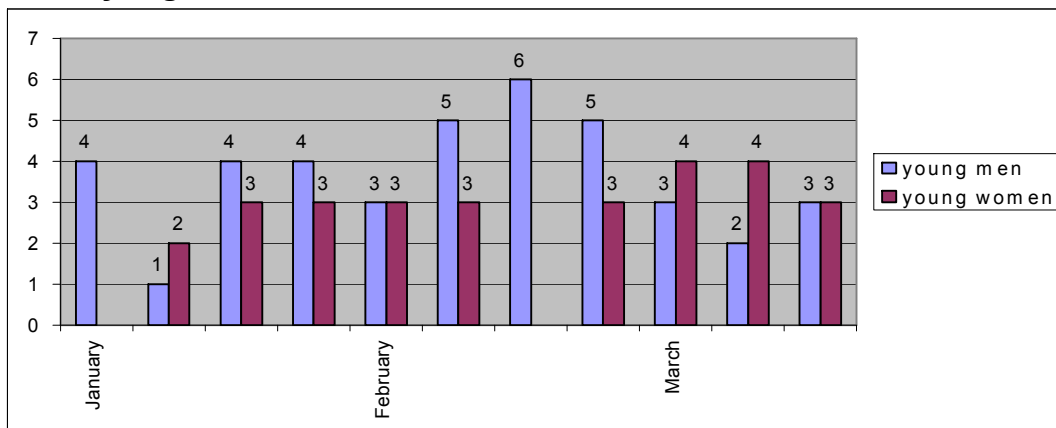
Weekly attendance the Monday group has been up. The average number of young people attending over 11 evening sessions was 5.9

The activities we have undertaken this quarter include: -

- Youth Speaks Conference- LGBT Sexual Health and Film by Young People

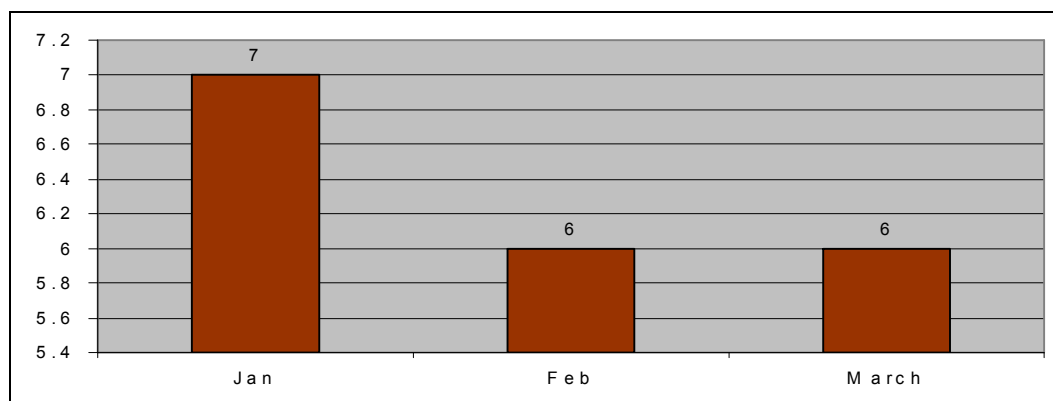
- LGBT History Month poster and pot a pansy- hope against homophobia project
- Valentines Gifts – How we appreciate ourselves
- Jewellery making
- DVD Chill Out Session
- Sexual Health- Mixing Fluids and STIs info
- Residential Trip Planning

Monday Night Attendance



Wednesday One Stop Shop: A safe space for Young people to drop in and talk through any issues eg job or College applications, CV writing, finance, housing referral

.Attendance



One to one, Email and Telephone support: Over the past quarter 15 young people have accessed the one to one service, either face to face or by telephone. 33 young people have accessed the ordinary telephone or email service to get info or advice. Issues young people have presented with in 121 sessions include: -Anxiety, Alcohol and drugs, Housing, Friendships/ Relationships, Education, Parents, Coming out, Teenage Pregnancy, Disability, Homophobia

Outreach took place at W5, Hope and Anchor, Windsor Castle and Bromptons, resulting in contact with 17 young men.

Young people successfully bid for cash for youth and chose a residential trip to Dorset. 11 people took part in self-development, team building and leadership exercises in March, and will be awarded an AQA accreditation. Members were also involved with the *Youth Speaks 08 Conference*, where they made a film about their issues to do with sex and relationship education and how it could be improved on for younger LGBT people in schools.

The Source Newsletter
5% allocation of annual budget

Issue 13 of the Source was printed and distributed at the start of April 2008, awaiting the announcement of Pan London HIV Prevention Programme outcomes. It will therefore be included in the next quarter's summary.

2500 copies printed per issue.

- Hounslow currently receives most copies (28%) with Hammersmith & Fulham receiving slightly less (25%) and Ealing receiving just under a fifth (17%). Kensington and Chelsea receive 10% of all copies distributed.
- Around a third of all copies are distributed through GP practices, many having asked for multiple copies. One third are distributed via sexual health and HIV services and clinics.
- Around a quarter of all copies are now distributed directly to gay and bisexual men's homes.

Table below shows the annual distribution

	Q1	Q2	Q3	Q4	Year
	2477	2488	2498	0	av %
Ealing	431	422	436	0	17
Hammersmith & Fulham	568	607	636	0	24
Hounslow	654	706	699	0	28
Brent	136	108	98	0	4
Hillingdon	160	157	162	0	6
Harrow	62	52	52	0	2
Westminster	130	112	111	0	4.5
Kensington & Chelsea	254	247	247	0	10
Other London	82	77	67	0	3

Table below shows the distribution by 'destination' in terms of direct mail or provider.

Agency Type	Q1	Q2	Q3	Q4	Year
	2477	2488	2498	0	%
Pub	340	430	250	0	18
Clinic	153	156	156	0	6
HIV service	140	140	140	0	6
GP	821	764	764	0	31
Counselling service	60	60	60	0	2

Direct mail - community	573	565	555	0	22
Direct mail - agencies	83	66	66	0	3
Information service	20	20	20	0	1
Social services	32	32	32	0	1
Housing	30	30	30	0	1
Youth service	225	225	225	0	9

Consultation

7% allocation of annual budget

During 2007/08 consultation focussed on gay and bisexual men's experiences of sexual health clinics across London, primarily on clinics in West London. It aimed to identify the strengths and weaknesses of current provision and better understand the current picture in terms of usage of sexual health services by gay and bisexual men.

The questionnaire was distributed through commercial gay venues, HIV drop-in centres and LGBT Youth Groups across West London. It was also made available to complete on-line on the GMP website.

192 complete questionnaires were fully completed and the report was disseminated to service providers including clinics, LGBT agencies, on the GMP website and to commissioners. In summary it concluded that:

- Sexual health services for MSM in West London are strong and considered to offer a consistently good standard of service
- For the most part MSM in West London are aware of what services are available within a sexual health clinic
- Some MSM revealed difficulties at service level, particularly in making contact with the clinics to arrange appointments as well as long waiting times when accessing some clinics. These delays may impact on future clinic attendance and overall wellbeing of MSM

1-2-1 Advice and Support

2% allocation of annual budget

- There have been 41 contacts with the 121 service this year. 31 were new callers, 10 return callers.
- 26% of callers this year were resident in Hounslow, 16% in Ealing and 23% in Hammersmith and Fulham.
- Callers were predominantly White (15 callers) 6 callers Asian, 4 callers, Mixed, 4 callers Black and 2 callers 'other'

- No callers have taken the opportunity to have 1-2-1 sessions this quarter.
- 7 callers self identified as HIV positive the other 24 as negative.
- Call content this year included peripheral neuropathy, stopping taking HIV medications, homophobia and safer sex negotiation skills.

	Number of new contacts				
	Q1	Q2	Q3	Q4	Total
Ealing	1	2	1	1	5 (16%)
Ham Ful	4	0	2	1	7 (22%)
Hounslow	2	3	2	1	8 (26%)
K & C	1	1	0	0	2 (6%)
Westminster			1	0	1 (3%)
Brent	1	1	1	1	4 (13%)
Hillingdon			1	0	1 (3%)
Other London	1	1	0	1	3 (10%)
Other UK	0	0	0	0	0 (0%)
Total	10	8	8	5	31

Resources Service

1.5% allocation of annual budget

Resources assessed as relevant to the sexual health needs of MSM are delivered free of charge to other professionals and agencies holding the WLGMP Resources Catalogue. This year GMP distributed

- 7817 printed resources were distributed during 2007/08.
- Across 11 agencies working with MSM or people with HIV in West London.

Other Services/Issues

Rapid HIV Testing Service

16% allocation of annual budget

WLGMP began its HIV testing service in January 2008. The service is a pilot and will be evaluated in May 2008.

In the fourth quarter figures are as follows:

Number of Testing sessions offered: 15

Number of men tested at Naz Project site: 23

Number of men tested at River House site: 9

Total number of men tested: 32

Number of positive tests: 0

Number of negative tests: 31

	No. of patients	Asian (6.7-19.8%)	Black (1.5-8%)	Mixed (3.2-3.6%)	Other (3.5-4.5%)	White (71.2-84.9%)	Unknown
Ealing	2 (6.3%)	1				1	
Ham & Ful	3 (9.4%)		1			2	
Hounslow	4 (12.5%)	1				3	
Ken & Chel	3 (9.4%)				1	2	
Westminster	0						
Brent	0						
Harrow	0						
Hillingdon	0						
Other London	17 (53.0%)				4	13	
Other UK	3 (9.4%)	1				2	
Total	32						
<i>% of target</i>	<i>100%</i>	<i>9.4%</i>	<i>3.1%</i>	<i>0%</i>	<i>15.6%</i>	<i>71.9%</i>	

Comments:

The ethnicity of patients was nearly three quarters White (23 patients) and therefore within target. 1 patient was Black and 3 patients were Asian, meaning the service was also within target for these groups. The service was over target for 'Other' (15.6%), but was under target for 'Mixed' ethnicities as no patients attended from this group.

Out of all the patients attending the service nearly one third were residents from Hammersmith & Fulham, Ealing & Hounslow combined (9 patients). 3 patients were from Kensington & Chelsea and 3 were from 'Other UK'. Just over half of those attending were residents from other London boroughs (17 patients).

29 of the 31 men who completed an evaluation to date rated their overall satisfaction with the service as 'Very Good'. The other 2 rated their satisfaction with the service as 'Good'

Budget Allocations to other areas of work not detailed above:

Referrals Directory: 0.4% of annual budget

PCT Strategy Groups: 1.4% of annual budget

PSE Work in Ealing: 2% of annual budget

Budget, training and Project Management, as well as core costs such as accommodation, fees etc are all built into service costs.