

REPORT ON THE WEST
LONDON GAY MEN'S
PROJECT HORSENDEN
HILL SURVEY 2008



TABLE OF CONTENTS

List of figures and tables	1
Executive Summary	2
Introduction	7
Sample description.....	8
General sexual behaviour	12
Horsenden Hill behaviour.....	16
Sexual health	20
Drug Use	25
Homophobic Abuse.....	27
Potential health services for gay men	28
Recommendations	30

LIST OF FIGURES AND TABLES

- Figure 1 Comparison of the proportion of gay and bisexual men at Horsenden Hill and UK gay population (n=35)*
- Figure 2 Ethnic group by percentage of respondents (n=35)*
- Figure 3 Origin location of respondents by borough (n=32, 3 missing)*
- Figure 4 Number of men had sex with in the last twelve months by number of respondents (n=35)*
- Figure 5 Proportion of men using different types of place used to meet new male sexual partners*
- Figure 6 Proportion of men concerned about their sexual risk taking and the type of sex they're having, by how strongly they agree or disagree with the statement.*
- Figure 7 Percentage of men stating that they would visit Horsenden Hill cruising ground, by season (n=33, 2 missing)*
- Figure 8 Proportion of men visiting Horsenden Hill in the last year, by frequency grouping (n=35)*
- Figure 9 Proportion of men taking part in different types of sexual activities at Horsenden Hill (n=35)*
- Figure 10 Proportion of respondents' attitudes on knowledge of sexual health services, by how strongly they agree or disagree with the statements*
- Figure 11 Proportion of respondents' sexual health knowledge by how strongly they agree or disagree with the statements.*
- Figure 12 Proportion of men using different types of drugs (n=33, 2 missing)*
- Figure 13 Attitude towards various statements on drug use, by how strongly they agree or disagree with the statements.*
- Figure 14 Proportion of respondents answering yes, no or not sure to whether they use different sources to get help or information on the issues covered in the survey*
-
- Table 1 Age by number and percentage of respondents (n=34, 1 missing)*
- Table 2 Religion by number and percentage of respondents (n=35, none missing)*
- Table 3 The number of men had sex with in the last 12 months, comparing Horsenden Hill, and the UK and London gay population (n=35)*
- Table 4 Percentage of respondents visiting Horsenden Hill, by time of the week and time of the day (n=34, 1 missing)*
- Table 5 Extent of testing amongst the men at Horsenden Hill compared with the UK gay population and the London gay population.*

EXECUTIVE SUMMARY

This report presents the findings from the Horsenden Hill Cruising Ground Survey 2008, carried out by the West London Gay Men's Project. The survey, administered to thirty five gay men at Horsenden Hill in the summer of 2008, has given an insight into various aspects of the men's lives, particularly relating to their sexual behaviour and attitudes, and their sexual health needs at this public sex environment (PSE). It has examined their levels of drug and alcohol use and their experience of homophobic crime at the PSE. Finally, it also attempted to elicit the men's opinions on potential services that could be provided by the West London Gay Men's Project.

The report has used the *Multiple Chances: Findings from the United Kingdom Gay Men's Sex Survey 2006* (Sigma/Weatherburn et al 2006), as the basis for comparison, hereafter referred to as the Sigma GMSS 2006.

BRIEF SUMMARY

Of the 35 men at Horsenden Hill that filled out a questionnaire, we can observe some broad patterns although it is difficult to determine how representative these men are of the larger population of men that use the cruising site on a regular basis. The number of men who declined to complete the survey was unrecorded. The men are generally over thirty years of age, are residents of Ealing and the surrounding boroughs, and have more sex with men than the UK gay population according to GMSS 2006 data. Although they mostly identify themselves as gay, they are more likely than the UK gay population to be bisexual.

The men usually visit the cruising site before 7pm, throughout the year, where most take part in masturbation and oral sex, although a significant number also have anal sex. They rarely experience homophobic crime or abuse at Horsenden Hill yet their fear of homophobic abuse and violence is very high.

A large proportion of the men have never had an HIV test. Whilst much higher than that found by the Sigma GMSS 2006 in the London gay population, this is similar to the UK gay population as a whole. Significantly, none of the men stated that they were HIV positive which was interesting when compared with the figures for London and the UK (13% and 8%, respectively). They generally claim to have a good knowledge of their sexual health and the sexual health services available to them.

Finally, a lot of the men drink alcohol and some use poppers, while the use of other drugs is very much lower. There is also a significant group of men who have unmet mental health needs, in that they report feeling low/depressed.

DETAILED SUMMARY

Sample Description

- The men were all aged over 30, with around 90% of the men over 40 years and almost a quarter (23.5%) over 60 years of age.
- Just over two thirds (69%) of the men identified themselves as gay, with the remaining men (31%) classifying themselves as bisexual. The proportion of bisexual men is particularly striking, when compared to those within the UK gay population ¹ as a whole, recently estimated to be 9.7%.
- Over three quarters (77%) of the men were white, with a BME representation of 23%. BME groups were more highly represented in this sample than that of the Sigma GMSS 2006 data, where 8% of individuals self-reported as BME.
- Three of the men (8.6%) considered themselves disabled. Although none of these three stated that it was an HIV related disability, two of the men did not indicate either way whether it was or wasn't.
- The largest percentage (40%) of the men came from Ealing (where Horsenden Hill is located), while the others mainly came from the surrounding boroughs.

General Sexual Behaviour

- The men at Horsenden Hill appear to be particularly sexually active when compared to Sigma GMSS 2006 data for the London and UK gay population. Almost three quarters (71%) of the men had had sex with five or more men in the last twelve months compared to under two thirds (61%) in London and half (49.7%) in the UK.
- Cruising grounds were the most popular place to meet new male sexual partners (83%), followed by gay bars, pubs or clubs (37%)
- A large majority (89%) of the men had not had anal sex without a condom with someone whose HIV status they didn't know, in the last twelvemonths.
- About a third of the men (34%) were concerned about their sexual risk taking, while over a quarter of the men (28.6%) were concerned with the type of sex they were having. However, a larger group of men (49%) were unconcerned with the sexual risks they were taking, and slightly over half (54%) were unconcerned about the type of sex they were having.

¹ The term 'gay population' is used in this report as shorthand for the collective of men that define themselves as either gay or bisexual.

Horsenden Hill Behaviour

- Summer was the most popular time to visit Horsenden Hill (88.6%), and winter the least popular time (57.1%). However, over half of the men are visiting the PSE in all seasons.
- Before 7pm was generally the preferred time of day to visit, and specifically the most popular time was before 7pm on weekdays with 88% of men saying they went at this time.
- The majority of the men (80%) said they had visited more than five times in the last year. Over a quarter of the men (29%) said they had visited more than 30 times, and a similar number of men said they had visited 5-12 times (26%) and also 13-29 times (26%)
- Masturbation was the most common activity at Horsenden Hill (66%) followed by oral sex (63%), and then anal sex (34%). A third of the men (34%) were having anal sex at the site, with only one man doing so unprotected. Oral sex with a condom (5%) was uncommon, as was anilingus (2%).

Sexual health

- Indicating safe sexual practices, the vast majority of the men (92%) had not had anal sex without a condom with someone whose HIV status they didn't know at Horsenden Hill in the last 12 months. However, three of the men (9%) had.
- A large proportion of the men (43%) had never had an HIV test, which was significantly higher than that found by the Sigma GMSS 2006 for the London gay population, where less than a quarter (23%) had never had a test. None of the men said that they had ever tested HIV positive, compared to 13% of gay men in London and 8% of gay men in the UK.
- Of those that had tested negative just under a half (48%) said they had tested less than a year ago, while the other (52%) tested over a year ago.
- Two thirds of the men (66%) thought they got enough information on sexual health for gay men, although a significant number (17%) thought that they did not
- Almost three quarters (71%) said that they knew how to get free condoms and lubricant, yet 17% of the men did not. However, the distribution of free condoms and lubricant by the interviewers during the survey, may have had a significant impact on these results.
- Over three quarters (77.1%) of the men said that they knew where their nearest sexual health clinic was located.
- Slightly less than three quarters of the men (71%) knew roughly their chances of becoming infected with HIV, or infecting others, based on the type of sex they were having, while a small minority (9%) did not know.

- The majority of men (83%) were certain that they knew how to use a condom correctly, and only two men (6%) were uncertain.
- A significant number of the men (34%) said that they had sometimes felt low/depressed.

Drug use

- Alcohol was the most popular drug with 79% of all the men saying they used it in the last 12 months, followed by amyl nitrate (27%).
- A smaller number of the men (12%) had taken cannabis while only one had taken cocaine, and none of the men had taken amphetamines.
- A small number (12%) said they had not taken any drugs, including alcohol, in the last 12 months.
- Two thirds of the men (66%) were unconcerned about their alcohol use, but just under a fifth (17%) said they were concerned.
- Half of the men (51%) were unconcerned about their smoking, but almost a quarter of the men (23%) were concerned with this aspect of their lives.
- Three quarters (74%) of the men were unconcerned about their drug use, and the remaining respondents said they neither agreed nor disagreed with the statement saying they were concerned about their drug use.
- Just over half of the men (54%) did not feel that drugs and/or alcohol were often responsible for them having unprotected sex, although almost a quarter of them (23%) did feel that this was often a factor.

Homophobic abuse

- The vast majority of the men (91%) said that they had not experienced or witnessed any homophobic crime at the cruising ground in the last 12 months. Of those that had, it was not very clear whether what they saw or experienced was homophobic.
- While the level of homophobic crime at Horsenden Hill appears to be low, the fear of homophobic abuse and violence is high. Over three quarters of the men (77%) were concerned about homophobic abuse, and an even larger proportion (87%) concerned about homophobic violence.

Potential services for gay men

- Talking to friends would be the most popular source of help or information on any of the issues covered in the survey, with around three quarters of respondents (74%) saying they would do this.
- The next most popular source of help or information would be a website for gay and bisexual men, with two thirds of the respondents (67%) stating that they would use this method.
- Email support would be least popular source of information, with more respondents saying they would not use this service (41%), than would (32%).

INTRODUCTION

This report presents the findings from a survey administered by the West London Gay Men's Project (GMP) to gay and bisexual men in the summer of 2008, at the known cruising ground, Horsenden Hill.

As part of its activities, WLGMP carries out outreach work for men who have sex with men across West London, and is looking to provide services for the men at Horsenden Hill. In October 2007, WLGMP produced a report based on a number of outreach sessions at Horsenden Hill. This report summarized the characteristics of the PSE users who had spoken to the outreach workers, and brought out a number of pertinent issues, including the frequency of use, homophobic crime and the relationship between the men and the police.

Following on from one of the recommendations of the report, which was to undertake a sexual health needs assessment of the MSM who use the site, WLGMP designed and carried out a survey with thirty five gay and bisexual men. The survey was far ranging, investigating aspects of the men's sexual behaviour and attitudes, both in general and at Horsenden Hill. It has looked at their levels of drug and alcohol use, and their experience of homophobic crime at the PSE. It has also sought the men's opinions on potential services that could be provided by GMP. The report that follows presents a detailed analysis of the results from this survey.

SAMPLE DESCRIPTION

AGE

All the men who stated their age on the survey were over 30 years, with 91.2% (n=31) over 40 years. There was a mean age of 50.91 (n=34, standard deviation (sd) = 9.504, median = 50, range = 30-69), which was significantly older than that of the overall UK gay population, where the mean age is 35.2 (n=12054, standard deviation (sd) = 12.2, median = 34, range = 14-81).

The following table presents the sample grouped by age brackets.

Table 1 Age by number and percentage of respondents (n=34, 1 missing)

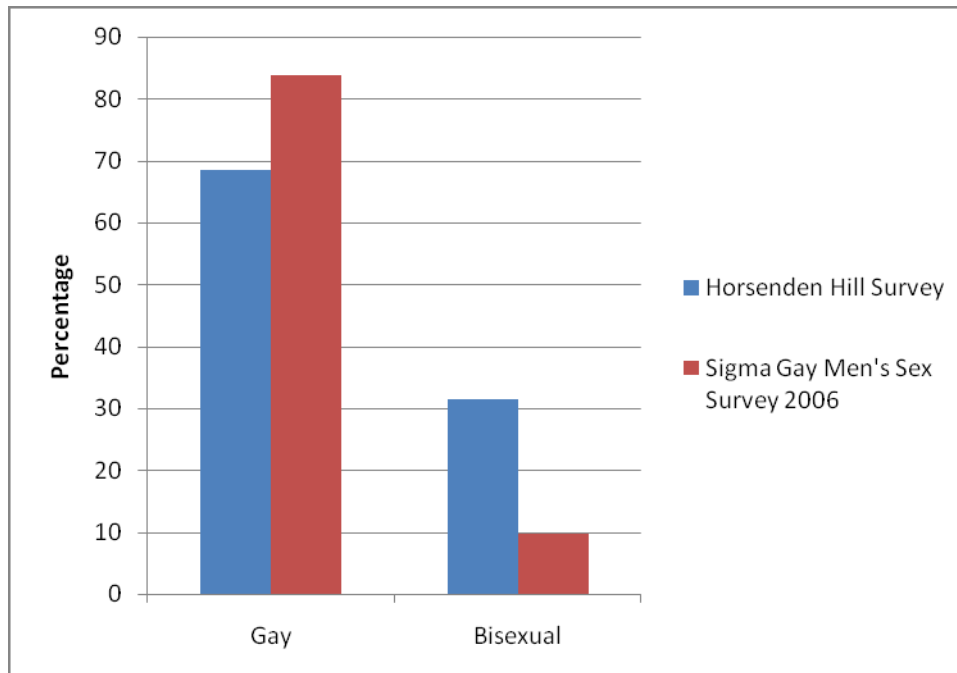
	Horsenden Hill Survey		UK Sigma Gay Men's Sex Survey 2006
Age	No. of respondents	%	%
14-19	0	0.0	7.2
20-29	0	0.0	29.9
30-39	3	8.8	28.9
40-49	11	32.4	20.9
50-59	12	35.3	20.9
60 and over	8	23.5	13.0

SEXUAL IDENTITY

The respondents were asked how they would describe their sexual identity, and required to tick one box to say either: Gay; Bisexual; Heterosexual; Other. If they stated Other, they were given space to elaborate.

Around two thirds of the men (68.6%, n=24) identified themselves as gay while the remaining third (31.4%, n=11) described themselves as bisexual. Interestingly, the proportion of bisexual men at Horsenden Hill was significantly larger than that within the overall UK gay population, which most recently has been suggested to be 9.7% by the Sigma GMSS 2006. None of the men said that they were straight or had any other identification that was not provided by the survey.

Figure 1 Comparison of the proportion of gay and bisexual men at Horsenden Hill and UK gay population (n=35)



ETHNICITY AND RELIGION

The men were asked both *What is your religion* and *What is your ethnic group*, and were asked to tick one box for each question that they thought best described themselves. For religion, the options were: Christian; Jewish; Hindu; Islam; Sikh; None; Other. If they choose Other, they were given space to specify. For ethnic group, there were fifteen options, within the categories of: White; Black; Asian; Mixed; Other.

Although White men are in the majority at Horsenden Hill (77.1%, n=27), we can see that BME groups are more prominent than in the UK gay population as a whole, according to Sigma 2006 data. Whereas 7.6% of the UK gay population are from a BME group, the proportion at Horsenden Hill is much higher at 22.9% (n=8).

Over two thirds of the respondents said they were either Christian (n=19, 54.3%) or Hindu (n=5, 14.3%), while a quarter (25.7%, n=9) claimed to have no religion.

Figure 2 Ethnic group by percentage of respondents (n=35)

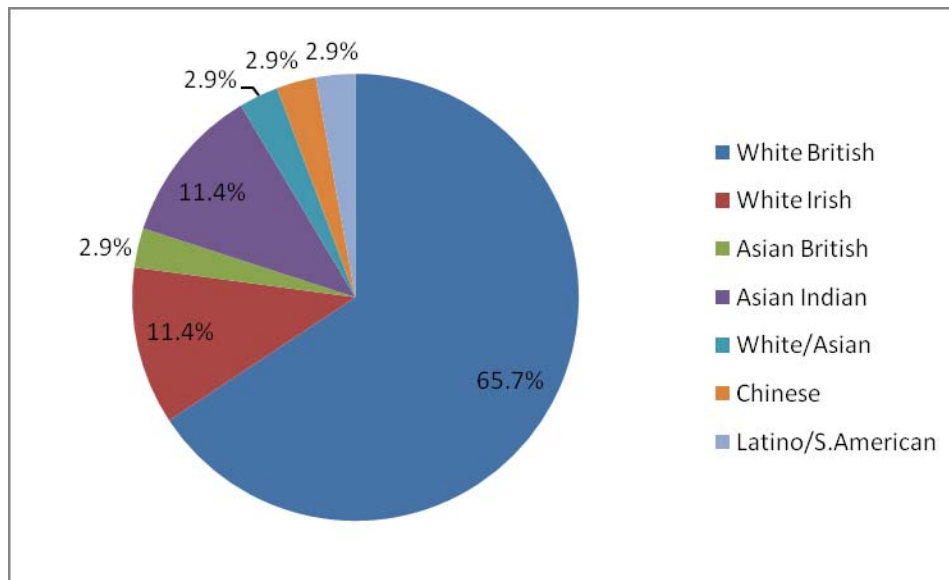


Table 2 Religion by number and percentage of respondents (n=35, none missing)

Religion	Number of respondents	%
Christian	19	54.3
Hindu	5	14.3
Buddhist	1	2.9
Pagan	1	2.9
None	9	25.7

DISABILITY

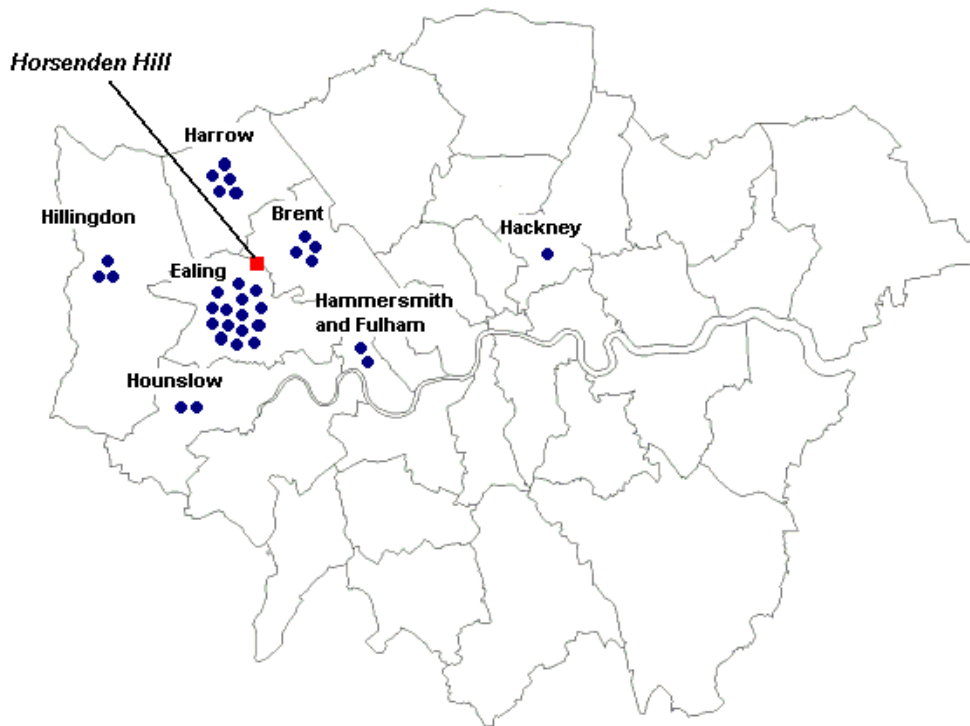
The men were asked, *Do you consider yourself to be disabled*, and required to tick either Yes or No. If they ticked Yes, they were asked is your disability HIV related?

Three men (8.6%) considered themselves disabled. Of these three, one man said they it was not an HIV related disability, while the other two men did not answer this question.

LOCATION

The men were asked *Where do you live (Who do you pay your council tax to)*, and were provided with a space to write their details in. The map below shows the spread of respondents (n=32) by London Borough (Council).

Figure 3 Origin location of respondents by borough (n=32, 3 missing)



GENERAL SEXUAL BEHAVIOUR

SEX WITH MEN IN THE LAST YEAR

The men were asked *How many MEN have you had sex with in the last 12 months*, and were asked to tick one of six options: None, 2-4, 5-12, 13-29 and 30 or more.

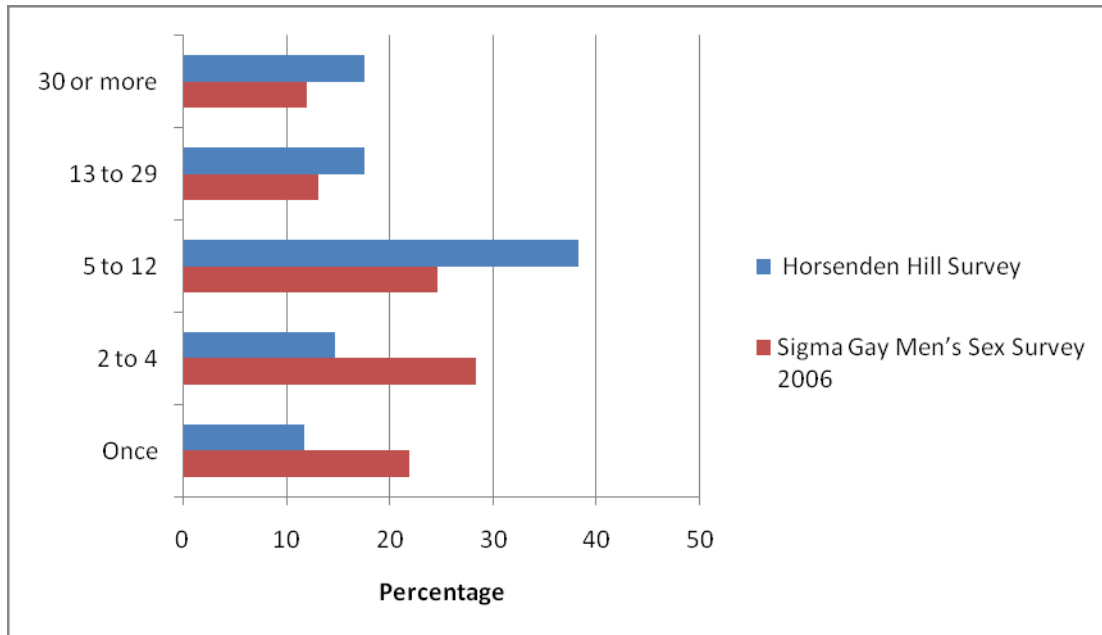
The results of the survey show that the men at Horsenden Hill were had more sex with men than the larger London and UK population, according to Sigma GMSS 2006 data. Excluding the one man in the survey who did not have sex with any men in the last year, the table below shows a comparison between Horsenden Hill, and the UK and London gay population.

Around three quarters of the men at Horsenden Hill (73.4%, n=25) said that they had had sex with *more* than five men in the last 12 months, compared with almost two thirds (61.3%) of male gay Londoners and half of the UK gay population (49.7%) as a whole. . A quarter of the men (26.5%, n=9) at Horsenden Hill said that they had had sex with *less* than five men in the last 12 months, compared with over a third of gay men in London (38.7%) and half (50.3%) of the UK gay population. This question is important as previous research by Sigma has shown a link between higher numbers of sexual partners and a higher probability of involvement in HIV risk behaviours.

Table 3 The number of men had sex with in the last 12 months, comparing Horsenden Hill, and the UK and London gay population (n=35)

Sex in last 12 months	Horsenden Hill Survey		London	UK
	Number of respondents	%	Sigma Gay Men's Sex Survey 2006	Sigma Gay Men's Sex Survey 2006
			%	%
Once	4	11.8	16.2	21.9
2 to 4	5	14.7	22.5	28.4
5 to 12	13	38.2	26.3	24.6
13 to 29	6	17.6	17.0	13.1
30 or more	6	17.6	18.0	12.0

Figure 4 Number of men had sex with in the last twelve months by number of respondents (n=35)

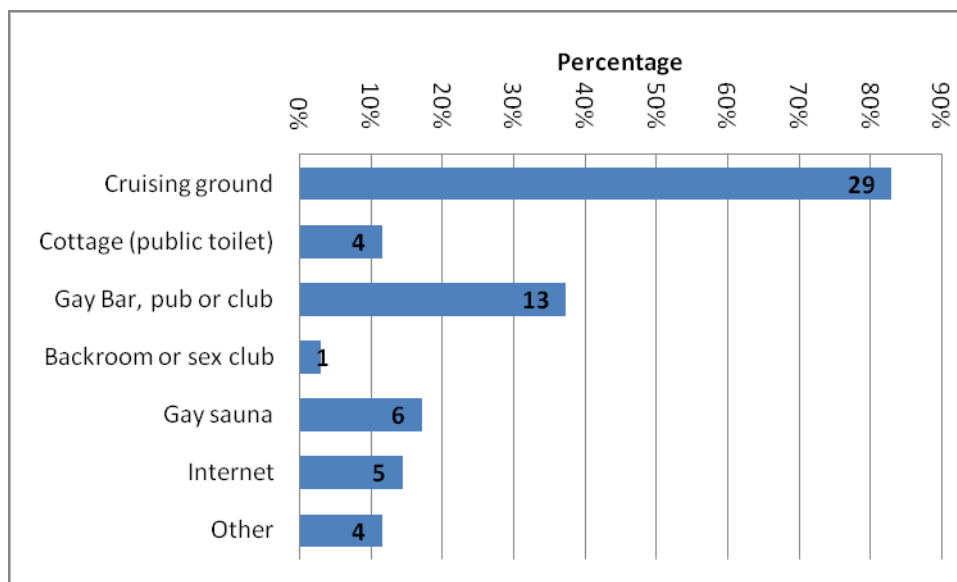


MEETING SEXUAL PARTNERS

The respondents were asked *Where have you met new male sexual partners in the last 12 months*, and were asked to tick all the following options that applied to them: Cruising ground; cottage (public toilet); Gay Bar, pub or club; Backroom or sex club; Gay sauna; Internet; Other. Those who choose Other were asked to specify where.

The majority of the men (82.9%, n=29) used a cruising ground and a third ((37.1%, n=13) went to a gay bar, pub or club to meet new male sexual partners. A very small number of the men used a cottage (11.4%, n=4), the internet (14.3%, n=5) or a gay sauna (17.1%, n=6) to meet new male sexual partners, while only person said they used a backroom or a sex club. Finally, a very small number of the men (5.7%, n=2) said they went to other places, one of which was holiday.

Figure 5 Proportion of men using different types of place used to meet new male sexual partners



UNPROTECTED ANAL SEX WITH A MAN OF UNKNOWN HIV STATUS

The men were asked *Have you had anal sex without a condom with someone whose HIV status you did not know in the last 12 months?*, and were required to tick either yes or no.

The vast majority of the men (88.6%, n=31) said that they had not had unprotected anal sex with someone whose HIV status they did not know, in the last 12 months.

LEVEL OF CONCERN OF SEXUAL RISKS AND TYPE OF SEX

The men were asked to indicate their reaction to the two statements concerning sexual risk taking and type of sex, by circling one of the following: Strongly Disagree; Disagree; Neither Agree nor Disagree; Agree; Strongly Agree.

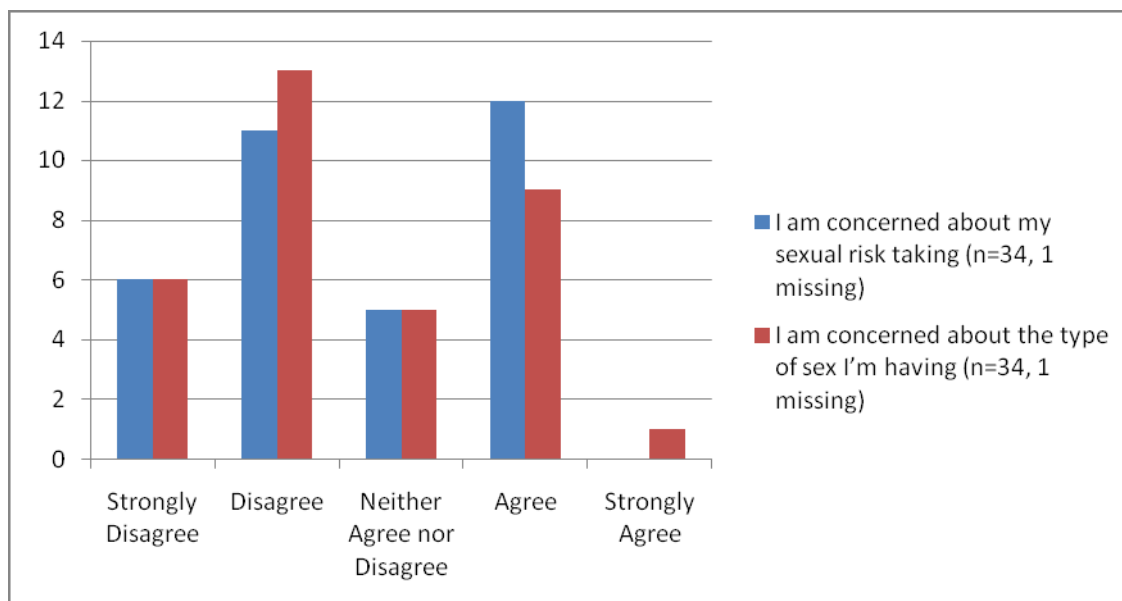
I am concerned about my sexual risk taking.

There was a clear split in the sample between the third (35.3%, n=12) that were concerned about their sexual risk taking and the half (48.6%, n=17) that were unconcerned.

I am concerned about the type of sex I'm having.

Quite a similar pattern can be observed in the sample of those that were concerned about their sexual risk taking (above) with those that were concerned about the type of sex they were having. Just over a quarter of the men (28.6%, n=10) agreed or strongly agreed that they were concerned about the type of sex they were having, while slightly over half of the men (n=54.3%, n=19) either disagreed or strongly disagreed that they were concerned with the type of sex they were having.

Figure 6 Proportion of men concerned about their sexual risk taking and the type of sex they're having, by how strongly they agree or disagree with the statement.



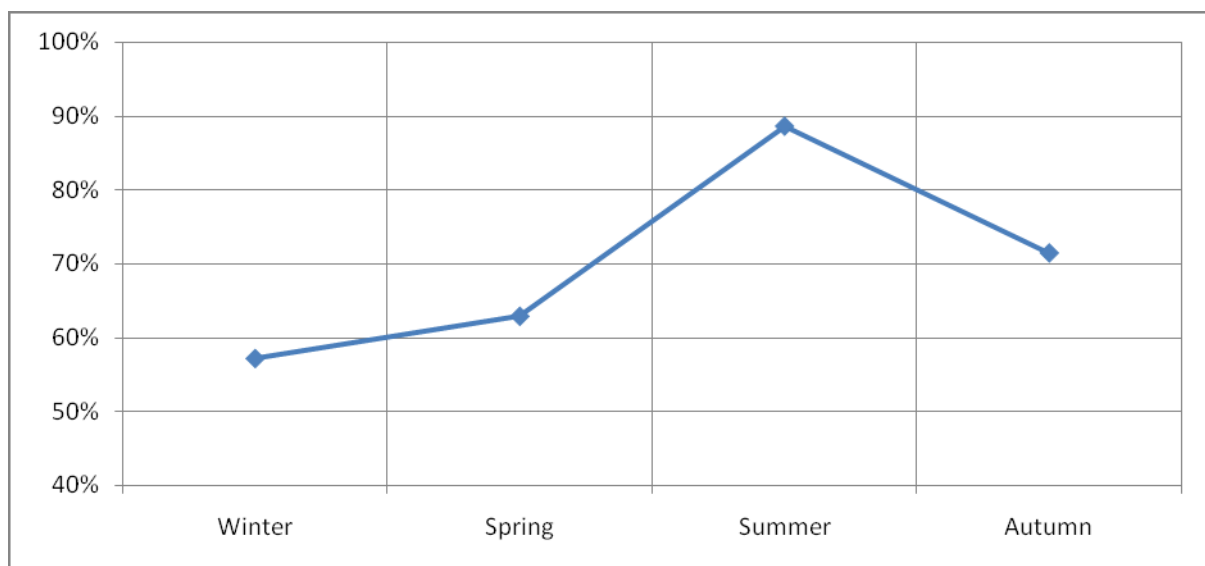
HORSENDEN HILL BEHAVIOUR

WHEN ARE THE MEN VISITING HORSENDEN HILL?

The men were asked *When do you visit this cruising ground for sex*, and required to tick all the boxes that apply to them from: In the winter; In the spring; In the summer; In the autumn; I don't visit for sex.

Of the 33 men (94.3%) who stated that they visit Horsenden Hill for sex at one time or another, the most popular season to visit was the summer, with 88.6% (n=31) of these men going at this time. Almost three quarters (71.4%, n=25) said that they visited in the autumn and 62.9% (n=22) went to the site in the spring. The least popular season to visit was the winter, yet still well over half (57.1%, n=20) of the men said they visited at this time.

Figure 7 Percentage of men stating that they would visit Horsenden Hill cruising ground, by season (n=33, 2 missing)



The men were then asked, *What times of the day do you visit this cruising ground*, and were able to tick all of the options that applied to them, from: Weekdays before 7pm; Weekdays after 7pm; Weekends before 7pm; Weekends after 7pm.

The diagram below shows that visiting before 7pm was generally preferred, especially on weekdays (88.2%, n=30)

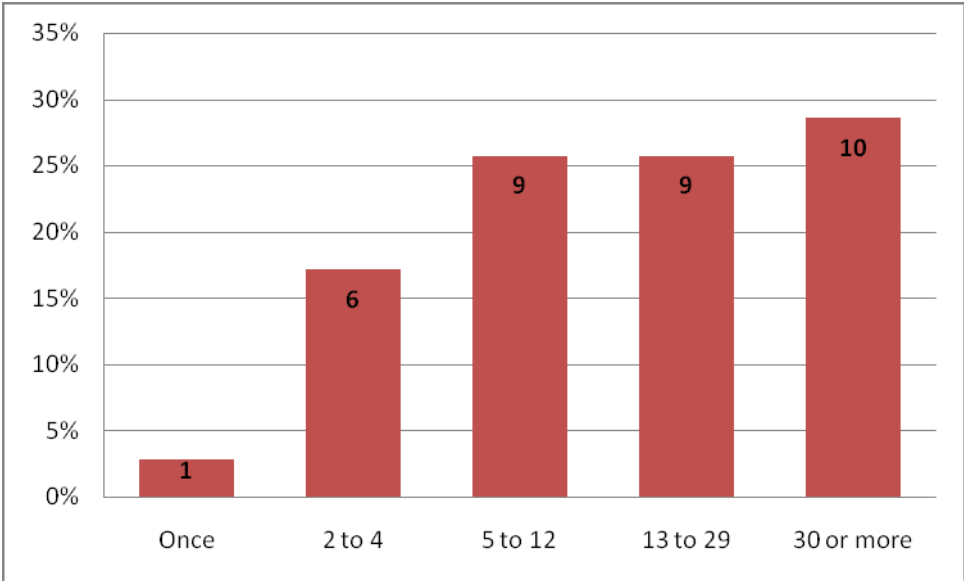
Table 4 Percentage of respondents visiting Horsenden Hill, by time of the week and time of the day (n=34, 1 missing)

	<i>Before 7pm</i>	<i>After 7pm</i>
<i>Weekdays</i>	88.2%	11.8%
<i>Weekends</i>	44.1%	17.6%

HOW OFTEN ARE THE MEN USING HORSENDEN HILL?

The question was asked, *How many times have you used this cruising ground in the last year*, and the men were asked to tick one of the following five options: Once; 2-4; 5-12; 13-29; 30 or more. The graph below shows the responses given to this question.

Figure 8 Proportion of men visiting Horsenden Hill in the last year, by frequency grouping (n=35)



SEXUAL ACTIVITY AT HORSENDEN HILL

The question *What type of sex are you having at this cruising ground*, was asked and the men were required to tick all the following options that they felt applied: Oral sex without a condom; Oral sex with a condom; Anal sex without a condom; Anal sex with a condom; Masturbation; Other. Those that ticked Other were asked to specify.

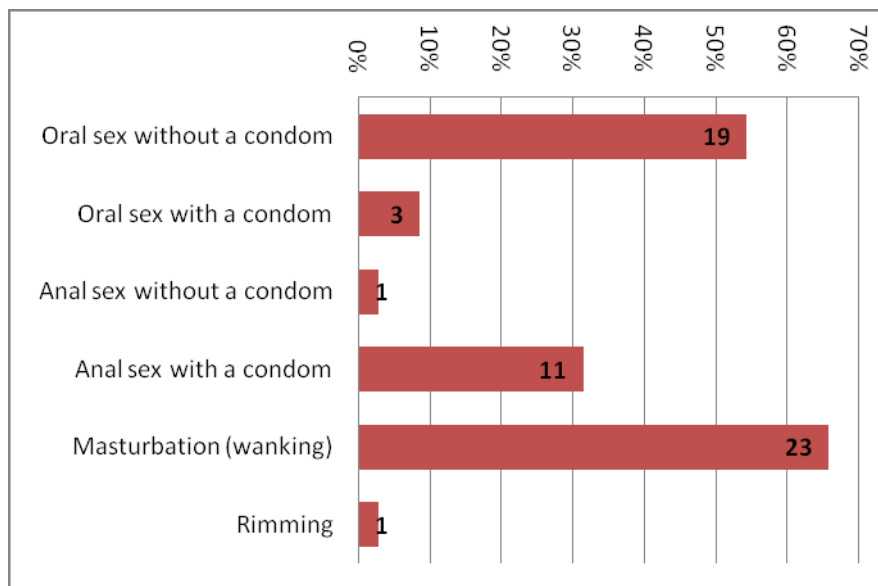
Masturbation (65.7%, n=23) and oral sex (62.9%, n=22) were the most frequently chosen activities in the survey, with most of those having oral sex doing so without a condom (86.4%, n=19). The frequency with which men had oral sex at Horsenden Hill was lower than the UK gay population in general, as found by the 2006 Sigma GMSS, where 95.5% and 97.2%, gave or received oral sex, respectively. Just over a third of the men (34.3%, n=12) were having anal sex at Horsenden Hill, with all but one of these men reporting doing so with a condom (91.7%, n=11).

Compared to the sexual behaviour of the overall UK gay population, that of Horsenden Hill specifically was less risky. At Horsenden Hill, only one man (1.8%) said he was having unprotected anal sex, compared with 41.7% and 42.2% of the UK gay population who were giving or receiving unprotected anal sex, respectively.

The high level of safe sexual practices at Horsenden Hill could be supported by the responses to the question, *Have you had anal sex without a condom with someone whose HIV status you did not know at this cruising ground in the last 12 months?*. The vast majority of the men (91.4%, n=32) had not had anal sex without a condom with someone whose HIV status they didn't know at the cruising site in the last 12 months, although 8.6% (n=3) had. However, it is

apparent that there is a weakness to this question. For instance, men may be having unprotected anal intercourse with known HIV+ men at Horsenden Hill, and therefore answer no to the question, which would obviously not indicate safe sexual practices. However, the fact that only one man reported having unprotected anal sex in the earlier question suggests that the men answering no in this question are doing so because they are using condoms. Nevertheless, it must also be noted that the distribution of condoms and lubricants during the survey may also affect the men's responses to the question concerning safe sex.

Figure 9 Proportion of men taking part in different types of sexual activities at Horsenden Hill (n=35)



SEXUAL HEALTH

HIV TESTING

The men were asked *Have you had an HIV test result*, and were given three options with which they could tick one: No, I've never tested; Yes, I've tested positive; Yes, my last test was negative.

The extent of HIV testing amongst the men at Horsenden Hill was similar to that of GMSS 2006 data overall (please see table below). A significant exception was that none of the men at Horsenden Hill said they had ever tested HIV positive, compared to 7.9% of gay men in the UK overall, according to Sigma GMSS 2006 data. Of course, the different data collection methods in the two surveys may have had a significant impact on the results of this question.

The picture changes at Horsenden Hill significantly when the results of this survey are compared to those found by Sigma for the London gay population. A much higher proportion (42.9%, n=15) of the men at Horsenden Hill had never had an HIV test, compared with 23.3% in London.

If the respondents had said that they had tested (with all in the case of this survey, HIV negative) they were asked *When was the last time you had an HIV test?* Just under half (47.4%, n=9) had tested less than a year ago, and just over a half had tested over a year ago (52.6%, n=10)

One respondent in the survey did *not* tick to say that he had had an HIV test (and whether the result was negative or positive), but did tick to say the test was less than 6 months ago. It has been left out of the table above because it is not possible to determine whether the HIV test result was positive or negative.

Table 5 Extent of testing amongst the men at Horsenden Hill compared with the UK gay population and the London gay population.

HIV Testing History		Horsenden Hill Survey		London Sigma Gay Men's Sex Survey 2006	UK Sigma Gay Men's Sex Survey 2006
		Number of respondents	%	%	%
Never Tested		15	42.9	23.3	37.7
Tested Negative	Less than a year ago	9	25.7	36.4	29.5
	Over a year ago	7	20.0	Not available	19.2
	Over 5 years ago	3	8.6	Not available	5.4
Total		19	54.3	63.9	54.1
Tested Positive		0	0.0	12.7	7.9

DEPRESSION

The men were asked for their reaction to the statement, *I sometimes feel low/depressed*, by circling either; Strongly Disagree; Disagree; Neither Agree nor Disagree; Agree; Strongly Agree.

There was a significant number of the men that felt low/depressed (34.3%, n=12). The remainder of the men either did not feel low/depressed (34.3%, n=12) or neither agreed nor disagreed with the statement (20%, n=7).

KNOWLEDGE OF SEXUAL HEALTH SERVICES

The men were asked to indicate their reaction to the following statements concerning their knowledge of sexual health services, by circling either; Strongly Disagree; Disagree; Neither Agree nor Disagree; Agree; Strongly Agree. The statements were: *I get enough information on sexual health for gay men, I know how to get free condoms and lubricant; I know where my nearest sexual health clinic is located.*

The majority of those that responded to the statements appeared to be knowledgeable about the sexual health services available to them.

I get enough information on sexual health for gay men

It was felt by most of the men (65.7%, n=23) that they got enough information on sexual health for gay men although a fifth (17.1%, n=6) disagreed or strongly disagreed with this statement

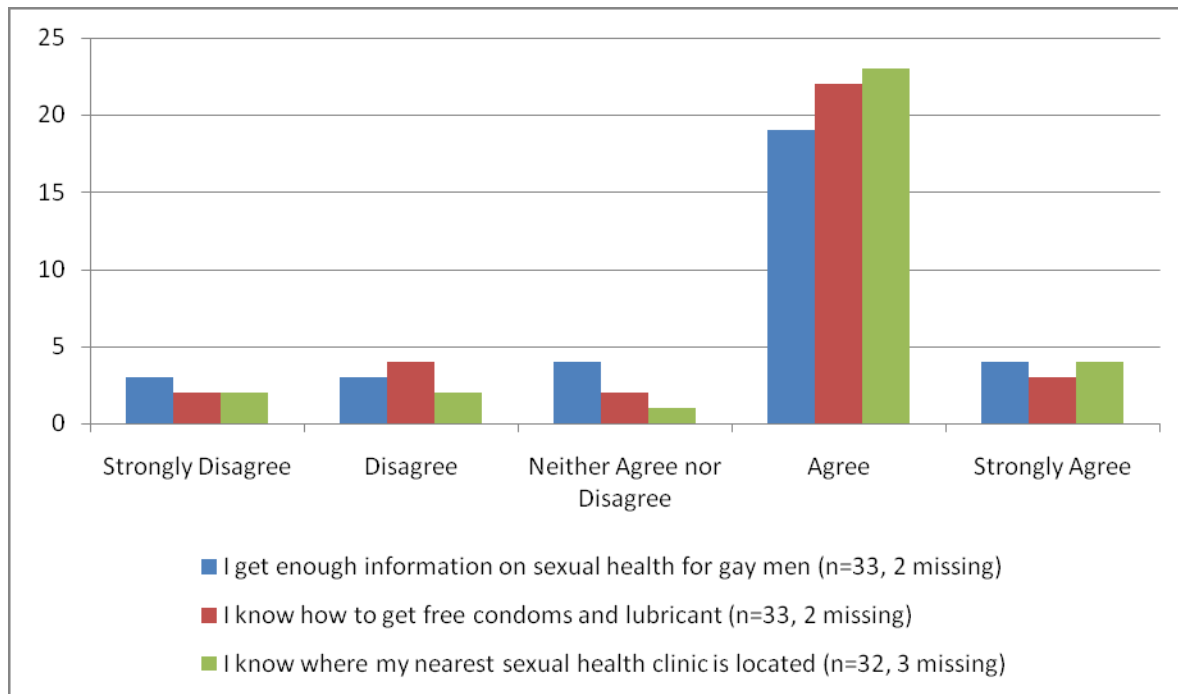
I know how to get free condoms and lubricant,

Almost three quarters of the men (71.4%, n=25) said that they knew how to get free condoms and lubricant, with a fifth of the men (17.1%, n=6) disagreeing or strongly disagreeing with this statement.

I know where my nearest sexual health clinic is located.

Over three quarters of the men (77.1%, n=27) knew where their nearest sexual health clinic was located, although over a tenth (11.4%, n=4) did not know.

Figure 10 Proportion of respondents' attitudes on knowledge of sexual health services, by how strongly they agree or disagree with the statements



SEXUAL HEALTH KNOWLEDGE

The men were asked to indicate their reaction to the following statements concerning their knowledge of sexual health services, by circling either: Strongly Disagree; Disagree; Neither agree nor disagree; Agree; Strongly Agree. The statements were: *I know roughly my chances of becoming infected with HIV, or infecting others, based on the type of sex I'm having; I'm certain I know how to use a condom correctly.*

The majority of those that responded to the statements appeared to be knowledgeable about sexual health issues.

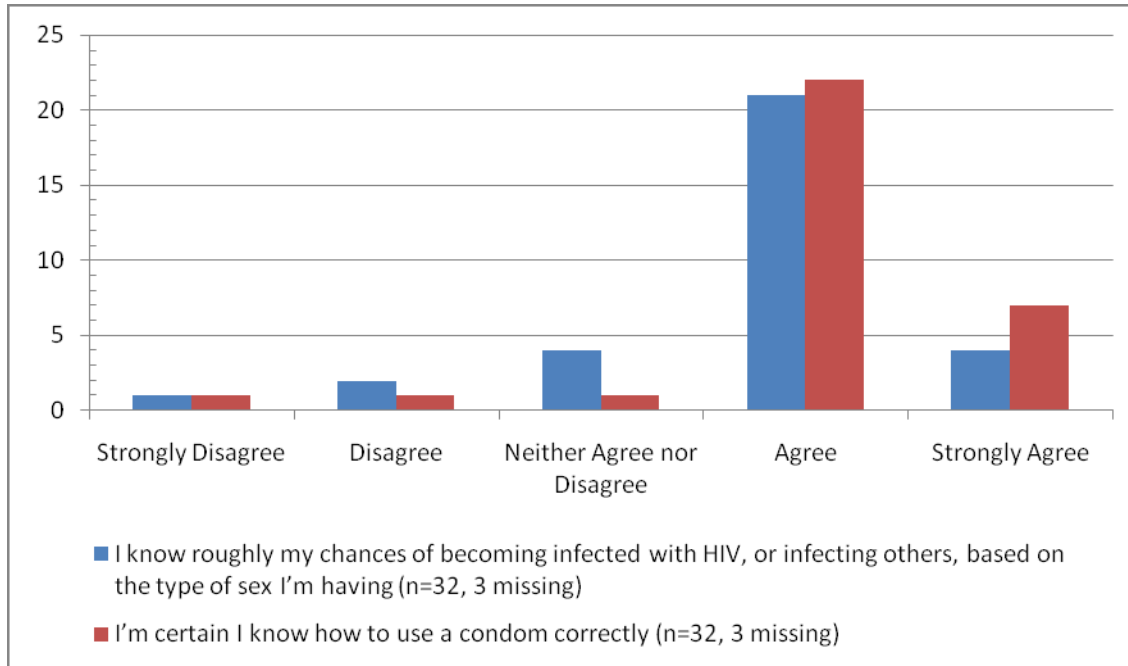
I know roughly my chances of becoming infected with HIV, or infecting others, based on the type of sex I'm having

Almost three quarters (71.4%, n=25) roughly knew their chances of becoming infected with HIV, of infecting others, based on the type of sex they were having, and slightly less than a tenth of the men (8.6%, n=3) either disagreed or strongly disagreed with this statement

I'm certain I know how to use a condom correctly.

The vast majority (82.9%, n=29) were certain that they knew how to use a condom correctly, and only two men (6.2%) appeared not to be so certain.

Figure 11 Proportion of respondents' sexual health knowledge by how strongly they agree or disagree with the statements.



DRUG USE

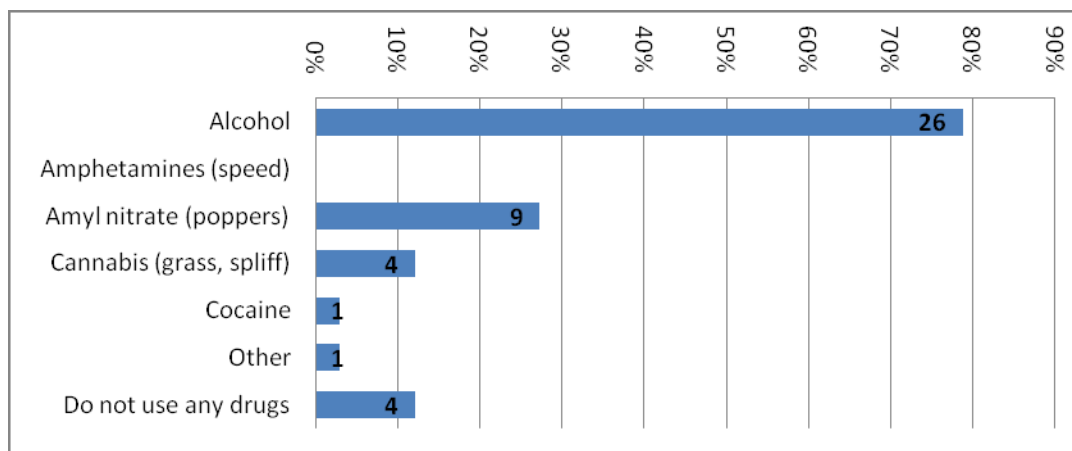
DRUGS USED IN THE LAST 12 MONTHS

The respondents were asked *Have you taken any of these in the last 12 months*, and were required to tick all that applied from: Alcohol; Amphetamines (speed); Amyl nitrate (poppers); Cannabis (grass, spliff); Cocaine; Other.

Alcohol was the most popular drug amongst the men at Horsenden Hill with around three quarters (78.8%, n=26) saying that they had taken it in the last 12 months. Roughly a quarter of the respondents (27.3%, n=9) had taken amyl nitrate (poppers)². A smaller number of men (12.1%, n=4) had taken cannabis, while only one man had taken cocaine in the last 12 months.

It is also possible to determine from the survey that a tenth of the men (12.1%, n=4) had not taken any drugs, including alcohol, in the last 12 months.

Figure 12 Proportion of men using different types of drugs (n=33, 2 missing)



ATTITUDES TO DRUGS

The men were asked to indicate their reaction to a number of statements concerning their concerns towards their drug use by circling either: Strongly Disagree; Disagree; Neither Agree nor Disagree; Agree; Strongly Agree. The statements were: *I am concerned about my alcohol use; I am concerned about my drug use; I am concerned about my smoking; I feel that drugs and/or alcohol are often responsible for my having unprotected sex.*

² Amyl nitrate is commonly known as “poppers” but the chemical compound now sold in the UK is iso-propyl nitrite.

I am concerned about my alcohol use

Two thirds of the men (65.7%, n=23) were not concerned about their alcohol use. However, some (17.1%, n=6), agreed or strongly agreed that they were concerned about their alcohol use.

I am concerned about my drug use

None of the men were concerned about their drug use, with three quarters of the respondents (74.3%, n=26) either disagreeing or strongly disagreeing with this statement.

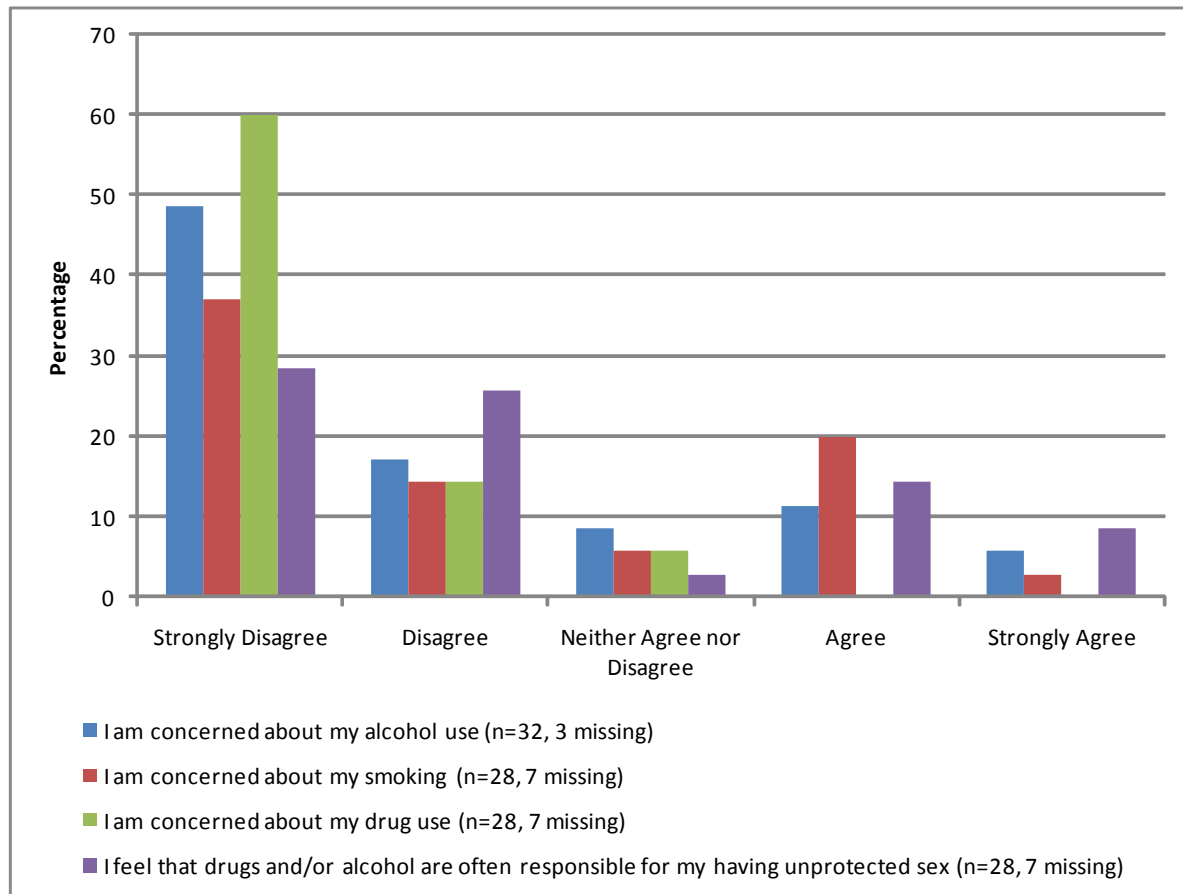
I am concerned about my smoking

Almost a quarter of the respondents (22.9%, n=8) were concerned about their smoking (22.9%, n=8), while a larger group (51.4%, n=18) were unconcerned.

I feel that drugs and/or alcohol are often responsible for my having unprotected sex

Around a quarter of the men (22.9%, n=8), felt that drugs and/or alcohol were often responsible for them having unprotected sex, while slightly over half (54.3%, n=19) did not agree.

Figure 13 Attitude towards various statements on drug use, by how strongly they agree or disagree with the statements.



HOMOPHOBIC ABUSE

HOMOPHOBIC CRIME AT HORSENDEN HILL

The men were asked *Have you experienced or witnessed any homophobic crime at this cruising ground in the last 12 months*, and asked to tick either Yes or No. If the respondent ticked yes, they were then asked whether it was reported and given the options of: Yes; No; Don't Know. If the respondent ticked yes, they were asked to provide details of what happened.

Homophobic crime does not seem to be a significant problem for the men at Horsenden Hill, with the vast majority of the men (91.4%, n=32) saying that they had not experienced or witnessed any homophobic crime at this cruising ground in the last 12 months.

Of the three men that said they had experienced or witnessed homophobic crime at Horsenden Hill, only one of them said it had been reported. One said that it hadn't been reported while the other said they didn't know.

Two of the respondents (both White British men over 50 years of age) said that they had been asked for money. Only one of these men classified this as homophobic abuse. Another 45 year old Asian Indian man simply wrote 'aggression' when providing details of the homophobic crime that he experienced or witnessed.

FEAR OF HOMOPHOBIC ABUSE AND VIOLENCE

The men were asked to indicate their reaction to the following statements concerning homophobia by circling either: Strongly Disagree; Disagree; Neither Agree nor Disagree; Agree; Strongly Agree. *The statements were: I am concerned about homophobic abuse and I am concerned about homophobic violence.*

While the level of homophobic crime at Horsenden Hill appears to be low, the fear of homophobic abuse and violence is very high.

I am concerned about homophobic abuse

Over three quarters of the men (77.1%, n=27) were concerned about homophobic abuse, while a fifth of the men (20%, n=7) were unconcerned.

I am concerned about homophobic violence.

An even larger proportion of the men (86.7%, n=30) were concerned about homophobic violence, with a third of these concerned men (33.3%, n=10) strongly agreeing with the statement. Only three men (8.6%) were unconcerned about homophobic violence.

POTENTIAL HEALTH SERVICES FOR GAY MEN

The men were asked, *If you need help or information about the issues above would you use any of the following*, and were asked to tick all that apply from the following list, using Yes; No; or Not Sure: Talking to friends; Outreach worker; A website for gay and bisexual men; E-mail support from a gay and bisexual men's worker; Phone support from a gay and bisexual men's worker; Information, support and advice sessions with a gay and bisexual worker.

Note: The response rate for this section of the survey was relatively low when compared to other sections. For each possible option, an average of 12 of men in the survey did not respond.

Three quarters of the respondents (74.1%, n=20), which is over half of all the men (57.1%), said that they would talk to friends about the issues covered in the survey

Half of the respondents (52.2%, n=12), which is only a third of all the men (34.3%), said they would speak to an outreach worker

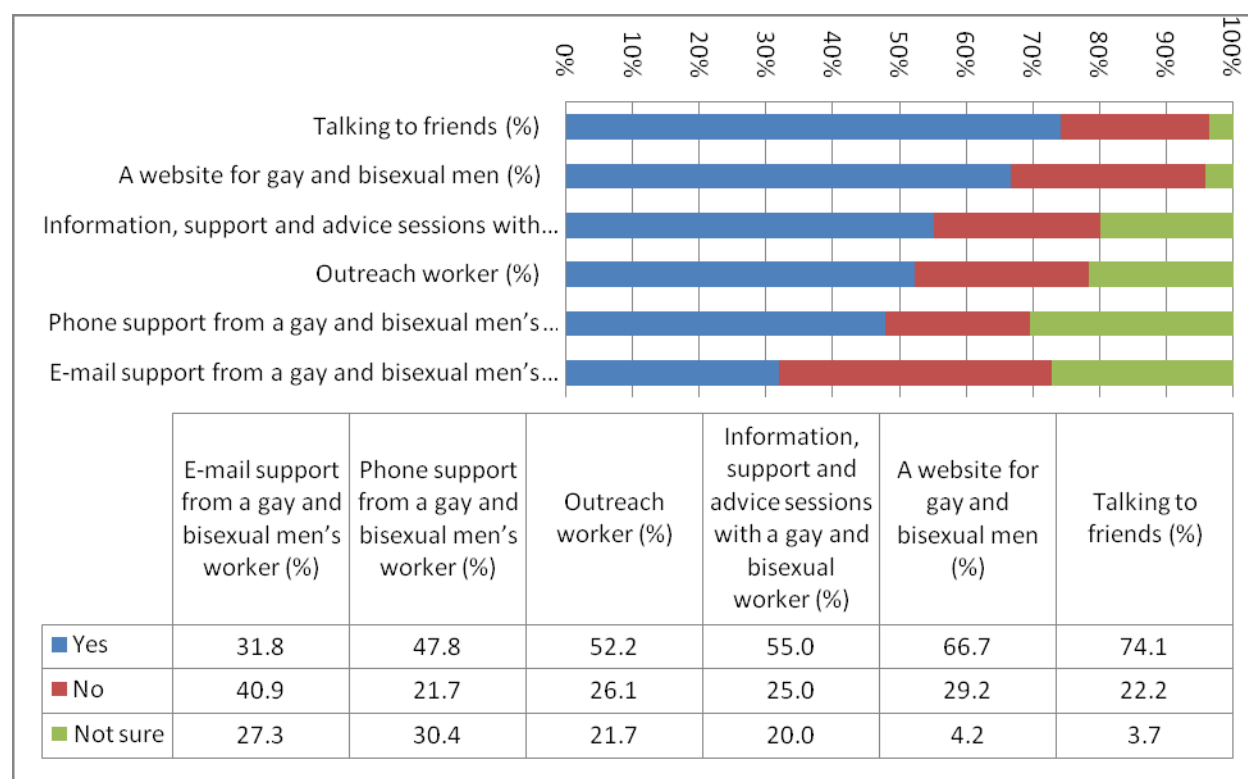
Two thirds of the respondents (66.7%, n=16), which is slightly less than a half of all the men (45.7%), said they would use a website for gay and bisexual men.

40.9% of the respondents (n=9), which is about a quarter of all the men (25.7%), said they would *not* use email support from a gay and bisexual men's worker. A smaller number which was around a third of the respondents (31.8%, n=7) said they would use email support. Just over a quarter of the respondents (27.3%, n=6) were not sure.

Almost a half of the respondents (47.8%, n=11), which is roughly a third of all the men (31.4%), said they would use phone support from a gay and bisexual men's worker.

Over half of the respondents (55%, n=11), which is almost a third of all the men (31.4%), said they would get information from advice sessions with a gay and bisexual worker.

Figure 14 Proportion of respondents answering yes, no or not sure to whether they use different sources to get help or information on the issues covered in the survey



SUGGESTED SERVICES IN WEST LONDON

The men were asked the open question What services would you like us to provide for gay and bisexual men in West London.

The suggestions included:

- Married men's support group, for those married men that are battling with the gay lifestyle
- Careful monitoring of known gay cruising sites, and also a website which updates or makes known the different cruising areas
- Free condoms
- Help and advice on sexual issues
- Provide information on current sexual infection rate, risks and so on, as well as more advice to those that don't regularly practice safe sex
- One man also stated that 'some backup' would be useful, although he did not elaborate further.

RECOMMENDATIONS

Although White men are in the majority at Horsenden Hill (77%, n =27), we can see that BME groups are more prominent than in the UK population as a whole. Whereas 7.6% of the UK gay population are from a BME group, the proportion at Horsenden Hill is much higher at 23% (n=8).

This provides an opportunity and greater access to work with this group from the MSM community.

- It is recommended that WLGMP continue to provide outreach during the summer months at his site.

While the level of homophobic crime at Horsenden Hill appears to be low, the fear of homophobic abuse and violence is high. Over three quarters of the men (77%) were concerned about homophobic abuse, and an even larger proportion (87%) concerned with homophobic violence.

- It is recommended that WLGMP engage with this MSM community to encourage the reporting of Hate Crime including Homophobia. There is the potential to do some joint work with Ealing Police to address the real fear of Homophobic violence.

As these men are less likely to go to gay venues including bars, clubs and saunas outreach at Horsenden Hill provides unique access to MSM who do not use venues.

The proportion of MSM who identified as bisexual was striking (31%) when compared to the UK population as a whole (9.7%).

- It is recommended that WLGMP continue to work at this site to engage with these hard to reach groups.

There is a significant group of men that feel low/depressed. Low self esteem is linked to risk taking behavior including unprotected anal sex. It was found that about a third of the men (34%) were concerned with their sexual risk taking. There is the potential to meet these unmet health needs by providing referral to the GMI mentoring and counseling commissioned Pan London Work.

The survey found that MSM at this site tended to be more sexually active in the last 12 months than the Sigma 2006 data for the UK and London. It was found that a large proportion of the men had not had an HIV test (43%).

- It is recommended that WLGMP continue to work to encourage the take up of regular sexual health screening including HIV testing in this group of men.