

The Source

Health Information for Gay & Bi Men



Upcoming 24s dates

June 2005

1 st	Birdcage
4 th	Club Exilio
10 th	George
11 th	W5
17 th	Club Kali
21 st	Ted's

July 2005

1 st	Birdcage
2 nd	W5 Pride Night!
15 th	W5
24 th	Birdcage
25 th	Ted's
30 th	George/Windsor

August 2005

1 st	Birdcage
6 th	W5
15 th	Ted's
19 th	George/Windsor
26 th	Bootylicious

This is the second issue of *The Source*, your free information point from the EHH Gay Men's Project.

Last month we gave you a run-down of the services provided by the Gay Men's Project and we've kept the handy centre section with useful local contact details for clinics and services.

This month we'll be looking at some of the issues raised by last year's community consultation exercise on homophobic crime and domestic violence. It makes for interesting reading, and if you've ever been on the receiving end, you'll discover you're not alone. We'll also spend some time looking at services for guys living with HIV in the area. As part of this year's consultation work we especially want to canvass the opinions of those guys who have been diagnosed for over 8 years to find out how we can best support them. I hope you find *The Source* useful and informative—as always please call 0800 587 8302 or email thesource@dial.pipex.com with any suggestions or comments.

What Do You Need? 2004—the results

During 2004 EHH Gay Men's Project ran a consultation with local gay and bisexual men on domestic violence and homophobic crime. Overall, 86% of returns were from men, 13% from women, and 1% of unknown gender. The average age of respondents was 37.

38% of the sample were from an ethnic group other than White British, 10% gave their main language as something other than English and the majority of these languages were other European languages.

11% identified as disabled and 12% as living with HIV.

Domestic Violence

In total, 21% of respondents had experienced domestic violence towards themselves. Of those, 20% at the hands of their current partner and 30% from an ex-partner. Family members accounted for 31%. The other 19% included friends, neighbours, strangers, house or flatmates, and ex-wives.

The data show that while half the people involved in the domestic violence were same-sex partners or ex-partners, there are substantial numbers of family members and other people involved, where the others are mainly men but also include women, and mainly known to the victims. In all, this is very much what we would expect.

Homophobic Crime

36% of respondents had experienced someone being homophobic towards them in the last year and 5% had witnessed

Homophobic crime and Domestic Violence

such an incident. Many respondents reported multiple incidents, so the percentages add up to more than 100%, with verbal abuse coming in at 85% and physical abuse at 27%. 9% also experienced damage to property.

There were only slight differences according to gender - 33% of women compared to 39% of men experiencing some form of homophobia; and 3% of women witnessing an incident compared to 6% of men.

When asked who the perpetrators were, the 'other' category came in at a whopping 79%. Once we broke that down, the main perpetrators of homophobic crime were mainly people unknown to the victim, but about a third of them were neighbours or co-workers. This represents a disturbing trend, telling us that many gay men and lesbians continue to live or work in environments where they are in fear of homophobic attack.

The good news is that people felt quite confident in reporting future incidents, with LGBT organisations rating 3 out of 4 in the table, followed by victim support services, the Police and employers at 2 out of 4. However, nearly 50% called for Police responses to homophobic crime to be improved.

If you would like a copy of the full report, please contact Russell on 0800 587 8302 or russell.fleet@hounslow.gov.uk for an e-copy.

Sexual Health Clinics

Ealing Hospital - Pasteur Suite

020 8967 5555 (reception) no appointment necessary

West London Centre for Sexual Health (Hammersmith)

020 8846 1567 / 1577 (reception) - appointments only

West Middlesex Hospital Sexual Health Clinic (Hounslow)

020 8321 5718 (reception) no appointment necessary

IF YOU HAVE SYMPTOMS OF AN STI,
PLEASE GO TO A CLINIC IMMEDIATELY
THEY WILL SEE YOU AS AN EMERGENCY PATIENT

Lesbian, Gay & Bisexual Youth Groups

I-identity (Hounslow)

08000 854 036 www.identityuk.com

Out on Thursday (Hammersmith)

0800 169 4318 www.outonthursday.org.uk

Yourzone (Ealing)

07985 12 64 42 yourzone@ealing.gov.uk

Local Community Safety Units

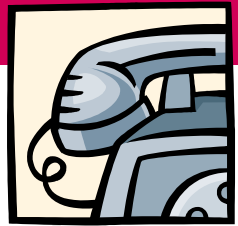
Ealing 020 8246 9617

Hammersmith 020 8246 2436

Hounslow 020 8577 1212

IN AN EMERGENCY ALWAYS dial 999

Crimestoppers 0800 555 111



Local Support Services

Living Well

Self Management Programme and support for people living with HIV

020 8746 2274 www.livingwellhiv.com

Naz Project London

variety of services for Spanish or Portuguese speaking men, Muslim, Somali, Ethiopian and Asian men

020 8741 1879 www.naz.org.uk

The River House

Drop-in centre for people living with, and those affected by HIV.

020 8753 5190 www.riverhousetrust.org.uk.

Other useful numbers / sources of information

NHS Helpline

0845 46 47 www.nhsdirect.nhs.uk

National HIV/AIDS/STI Helpline

0800 567 123

THT Direct

0845 12 21 200

London's sexual health directory for gay men on the web
www.metromate.org.uk

London Lesbian & Gay Switchboard

020 7837 7324

Gay Men with HIV—What Do *You* Need?

Every year the EHH Gay Men's Project runs a consultation with the local gay community called *What Do You Need?* Last year's work was on Homophobic crime and Domestic Violence and is summarised on pages 2 and 3 of this issue.



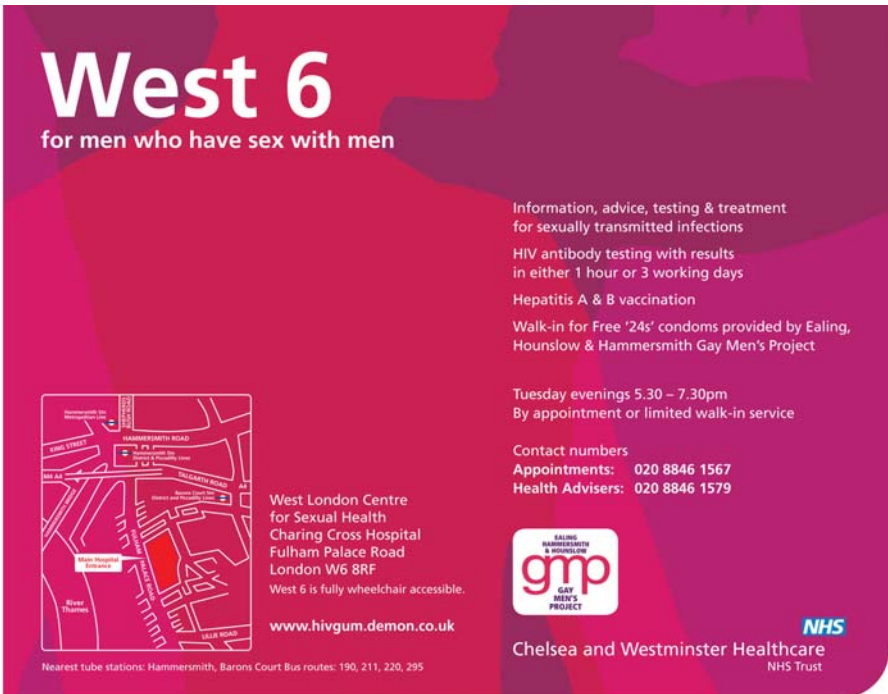
This year's work will be aimed at gay men living with HIV. In particular, we are interested to get the views of men who are long term diagnosed, to find out how support services could be made more appropriate to your needs.

The questions we'll be asking are designed to help us tease out what sort of thing you want from us—it could be practical support and information services for things like going back to work; it could be an open drop in for people to share experiences; a series of workshops looking at topics such as finding the future again, sex and relationships or the ever present issue of disclosing your HIV status; it could be a phone helpline—anything you suggest.

The outreach team will be in the bars and clubs in our area later this year handing out the questionnaires and will be only too happy to help you with them if you want. We'll be running the consultation in parts over a period of months to avoid having to give you a booklet which takes ages to fill out. Hopefully this will make it easier for you to give us your views without having your evening out interrupted. Look out for the boys in the GMP T-shirts with clipboards, coming to a bar near you very soon..

New Gay Men's Clinic at Charing Cross

You may have seen the adverts in the gay press for West 6. No, it's not West 5's Hammersmith branch, it's a new sexual health service aimed at gay men. The West 6 Clinic opens its doors on Tuesday 7th June and is based at Charing Cross Hospital's West London Centre for Sexual Health. It will run every week on Tuesday evenings from 5.30 to 7.30pm, enabling guys who work during the day to get specialist advice and treatment for sexually transmitted infections. Services offered include one hour HIV testing, Hep A and B vaccinations and a limited walk-in service for emergencies. Appointments can be made on 020 8846 1567, and the health adviser team can be contacted direct on 020 8846 1579. The GMP's 24s service will also be available on a walk-in basis, staffed by a GMP worker—don't forget your membership card.



West 6
for men who have sex with men

Information, advice, testing & treatment for sexually transmitted infections


HIV antibody testing with results in either 1 hour or 3 working days

Hepatitis A & B vaccination

Walk-in for Free '24s' condoms provided by Ealing, Hounslow & Hammersmith Gay Men's Project


Tuesday evenings 5.30 – 7.30pm
By appointment or limited walk-in service

Contact numbers
Appointments: 020 8846 1567
Health Advisers: 020 8846 1579



West London Centre for Sexual Health
Charing Cross Hospital
Fulham Palace Road
London W6 8RF
West 6 is fully wheelchair accessible.

www.hivgum.demon.co.uk



Chelsea and Westminster Healthcare
NHS Trust

Nearest tube stations: Hammersmith, Barons Court Bus routes: 190, 211, 220, 295

The EHH Gay Men's Project

Outreach Team

Outreach Worker:



George Leonard

T: 020 8583 2586

F: 020 8583 2477

george.leonard@hounslow.gov.uk

Gorgeous George and the gang—Andrew, Michael, Ibrahim, Ajamu, Rui and Yuwrajh—are often to be found at the local watering holes, providing sensible and sensitive advice and support to anyone who needs it, as well as running our groundbreaking free condom and lube scheme, **24s**. It's not likely that you will encounter the whole team in one go - there would be no space for the customers!

Our guys are usually out and about in twos, or in threes at The Birdcage and West 5. They are all experienced in sexual health matters and can advise you on matters of an intimate nature, or refer you onwards if they are unable to help there and then. They are not doctors, however, so if anything is oozing please don't whip it out there and then in the bar as they are unable to offer diagnoses or treatments. They may even approach you as part of their general outreach work, but they will be discreet and leave you alone if you're out for a drink with your mates and don't want to be disturbed.



Ajamu



Andrew



Michael



Rui



Ibrahim



Yuwrajh